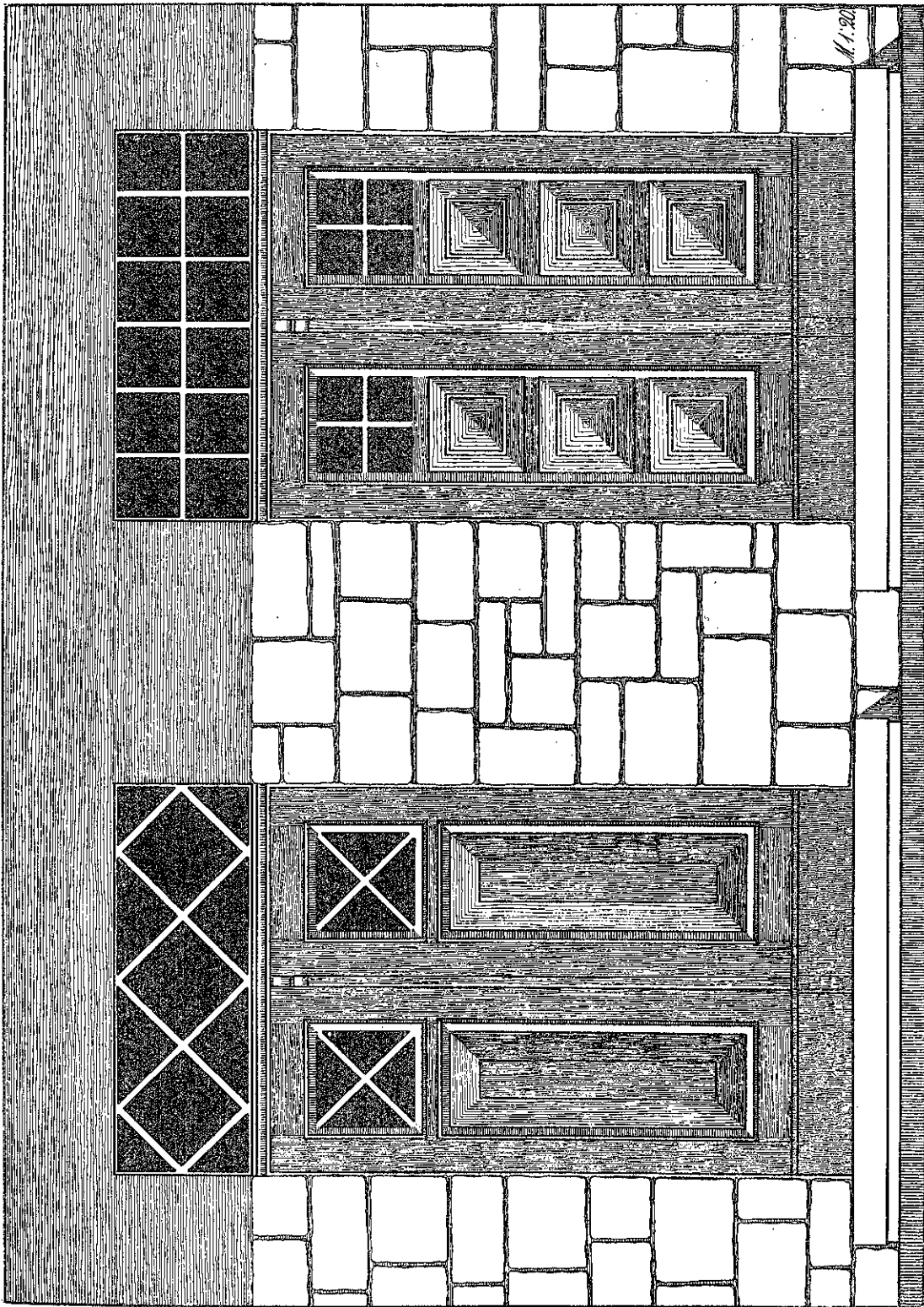
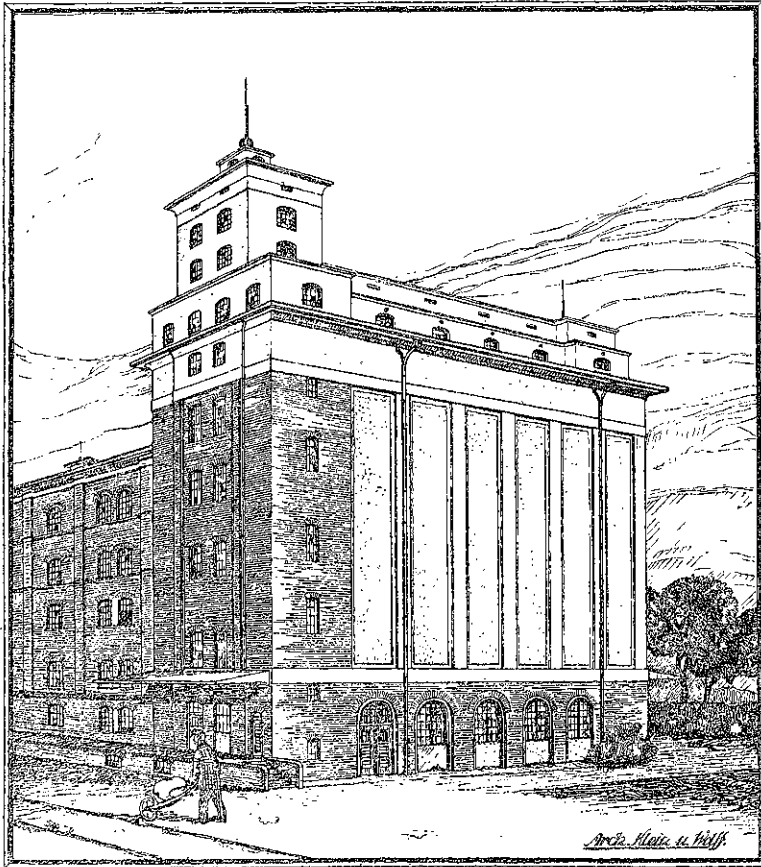
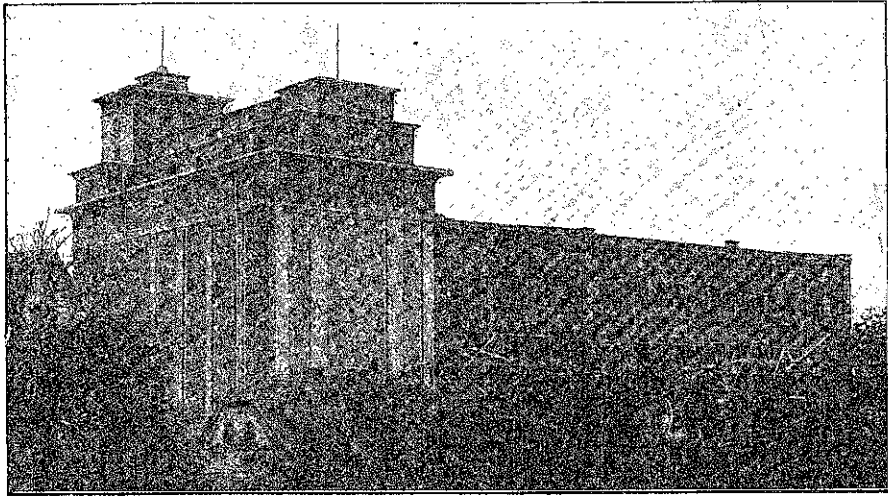
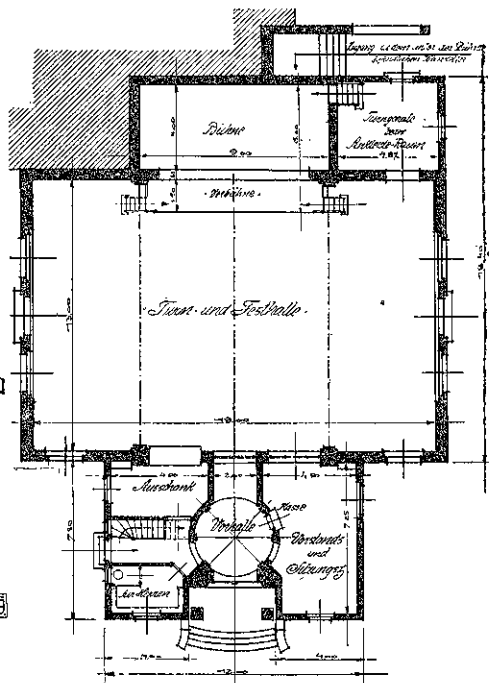
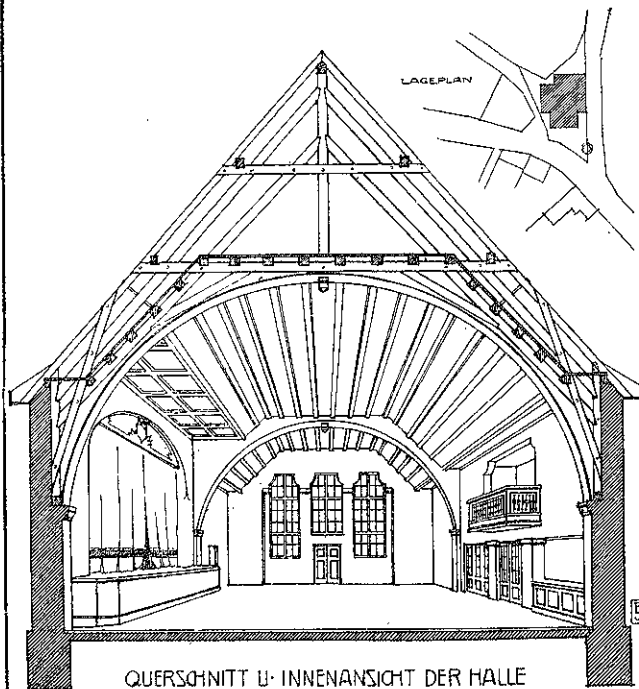
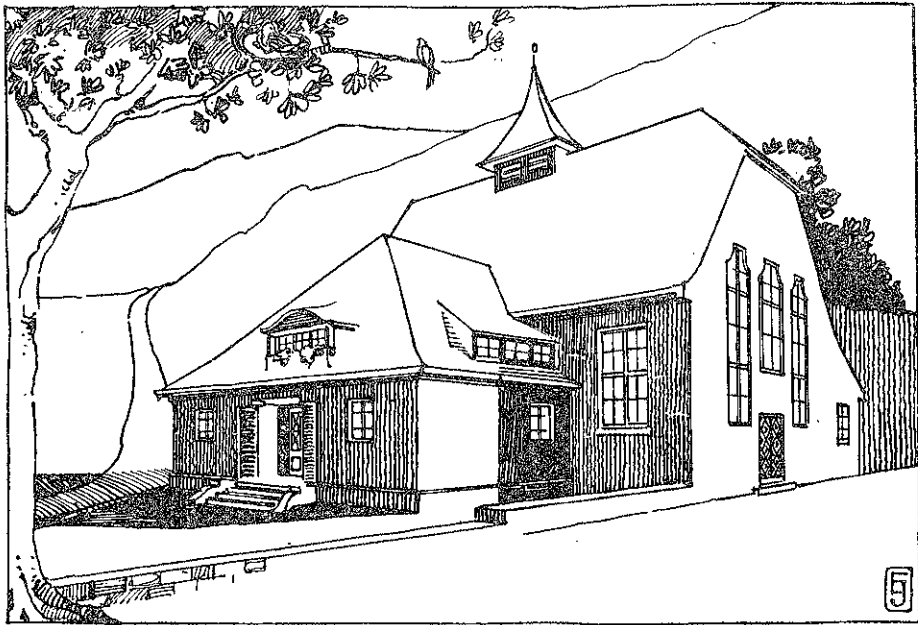


ARCH. H. HILLÉ IN ZITTAU I SA. KNABEN-, MÄDCHEN-, MÄDCHEN- U. FORTBILDUNGSSCHULE MIT 2 LEHRERWOHNUNGEN DER SIEDLUNG GRUBE IRMENCARD

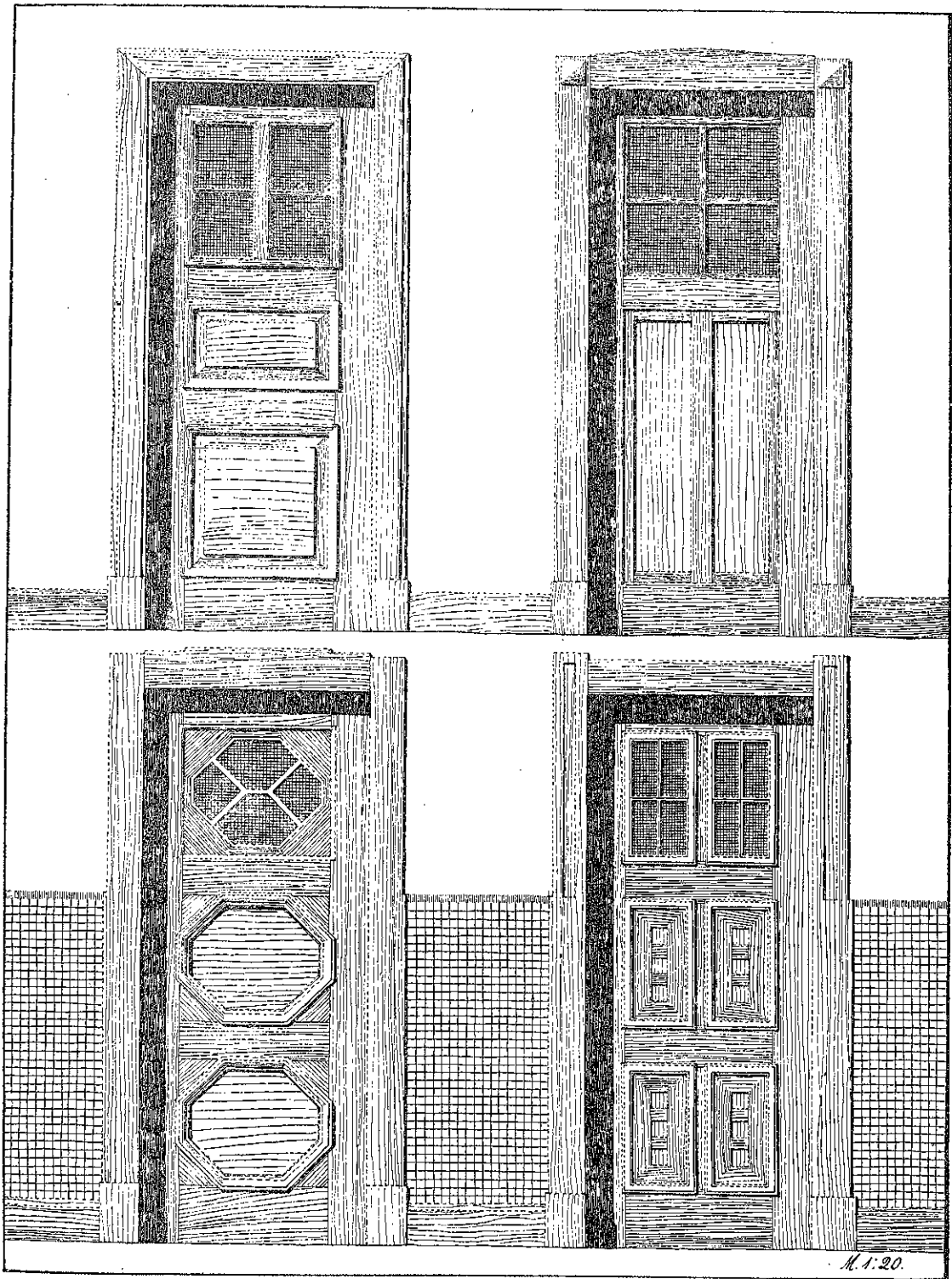




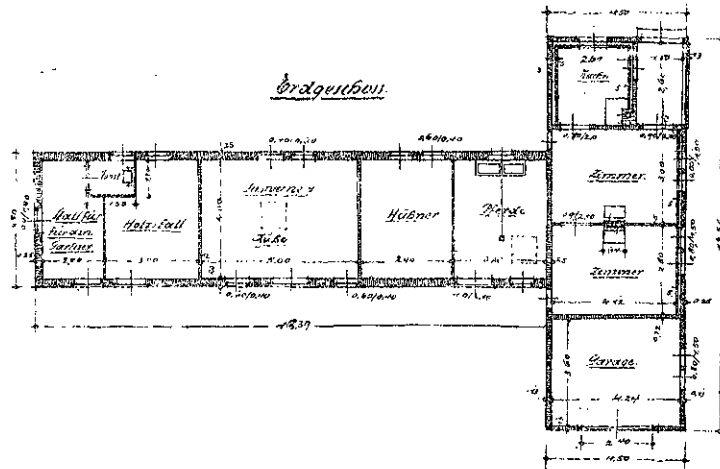
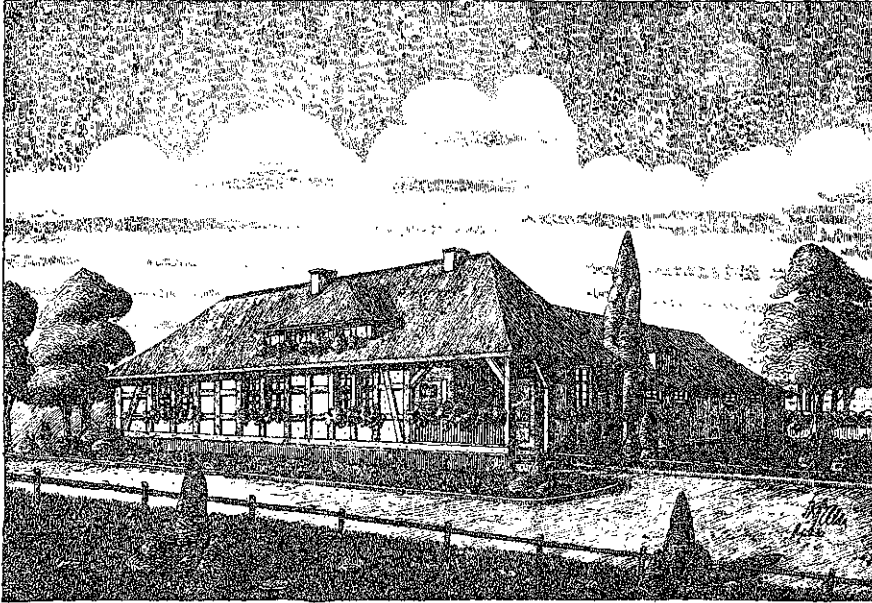
ARCHITEKTEN KLEIN U. WOLFF IN BRESLAU. □ ————— □ GETREIDESILO FÜR GUHRAU I. SCHLES.



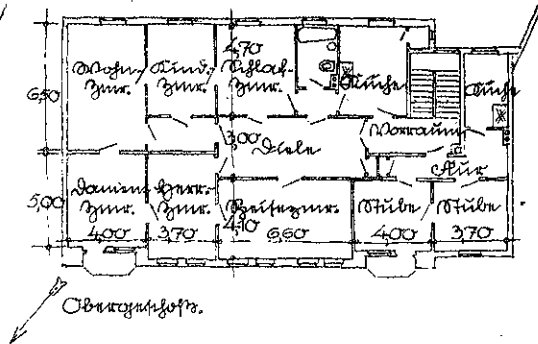
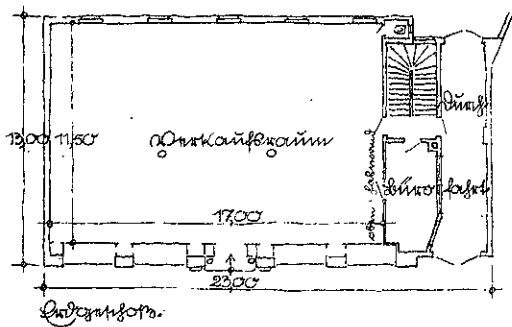
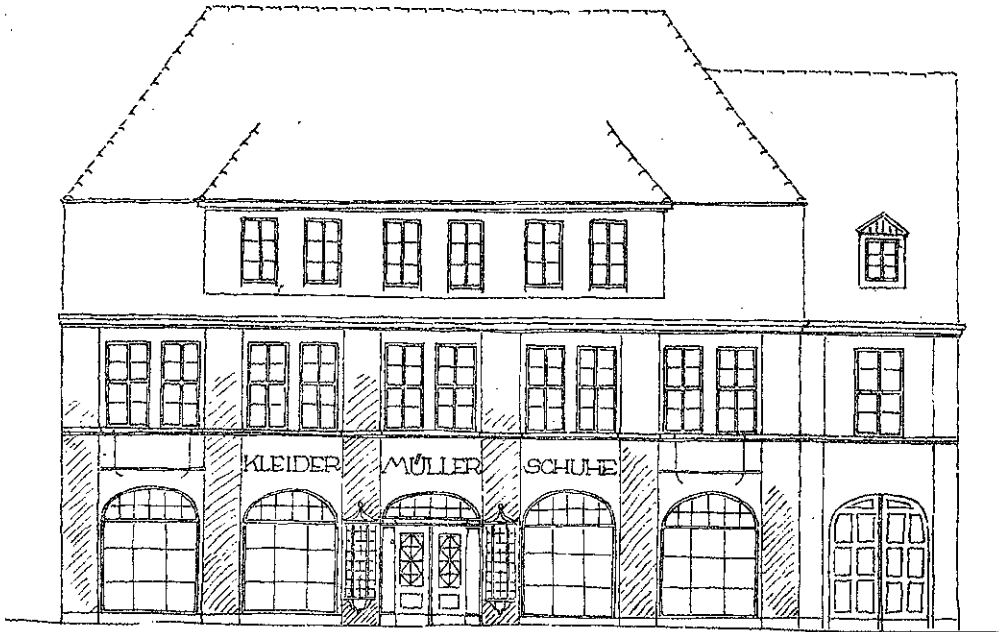
ARCHITEKT ENGELBERT JUSSIN IN WORMS. □ — □ TURN- UND FESTHALLE IN ALSHEIM, RHEINHESSEN.



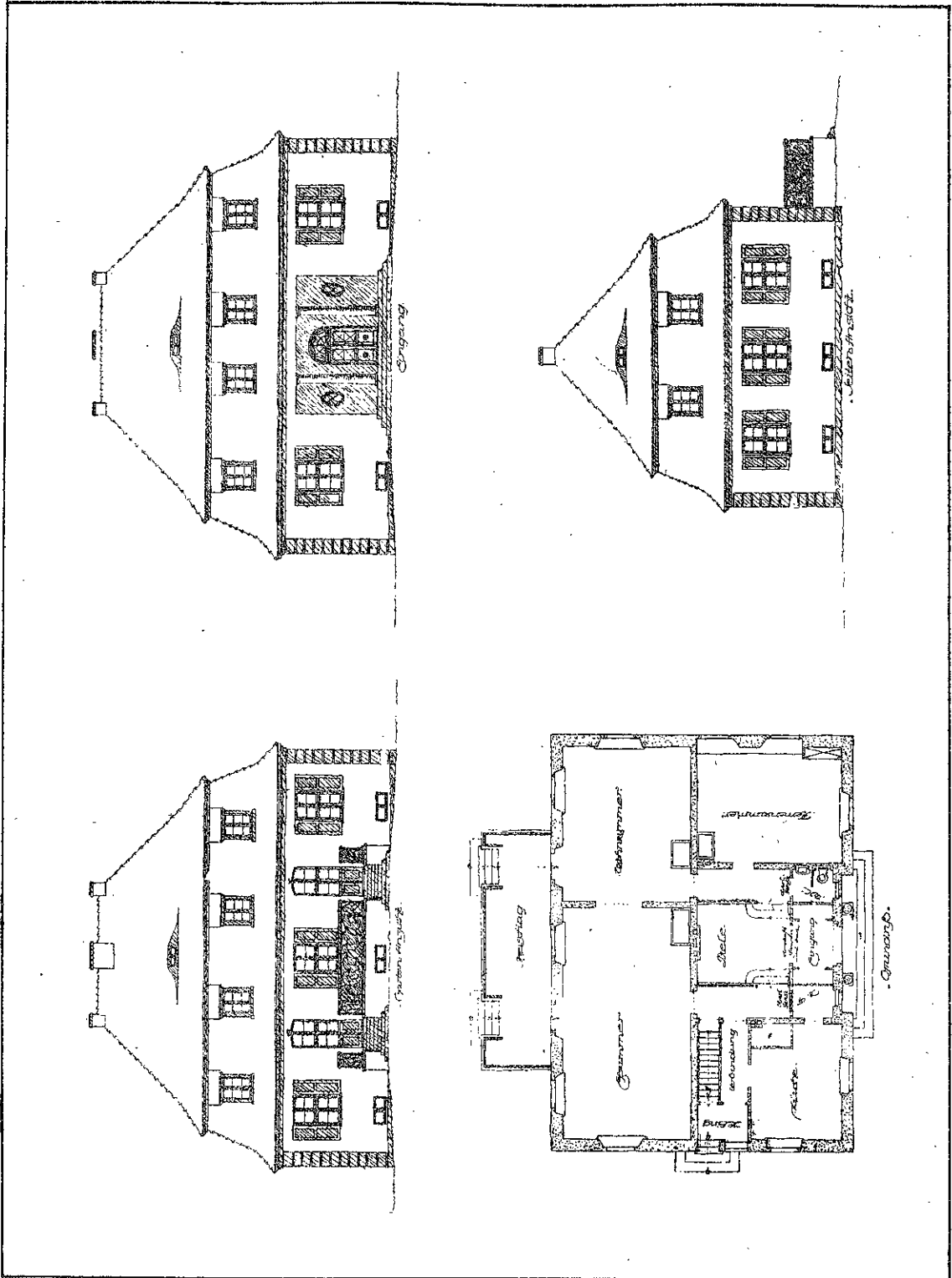
ARCHITEKT STRUNK † IN KIEL. □ ————— □ BAULICHE EINZELHEITEN. □ ZIMMERTÜREN.



ARCHITEKT FRANZ BALDA IN BERLIN. □ ————— □ GÄRTNERHAUS MIT WIRTSCHAFTSGEBÄUDE.

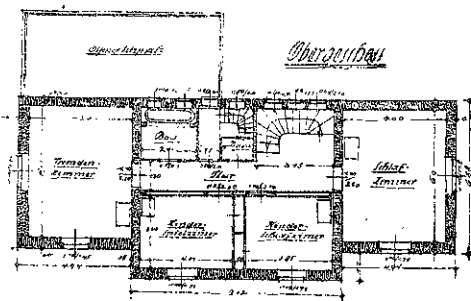
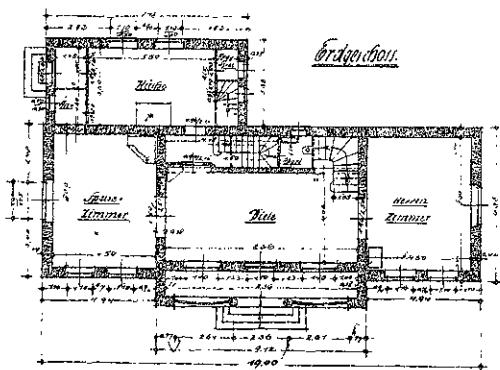
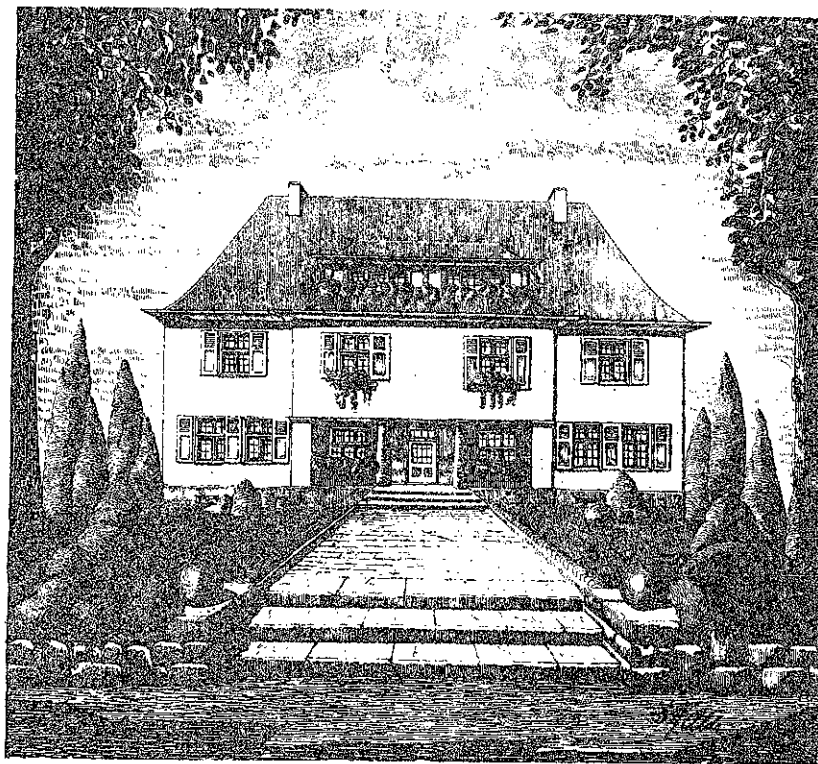


ARCHITEKT WALTER BUCHHOLTZ IN STOLP I. POM. □ ————— □ KAUFHAUS FÜR EINE KLEINSTADT.

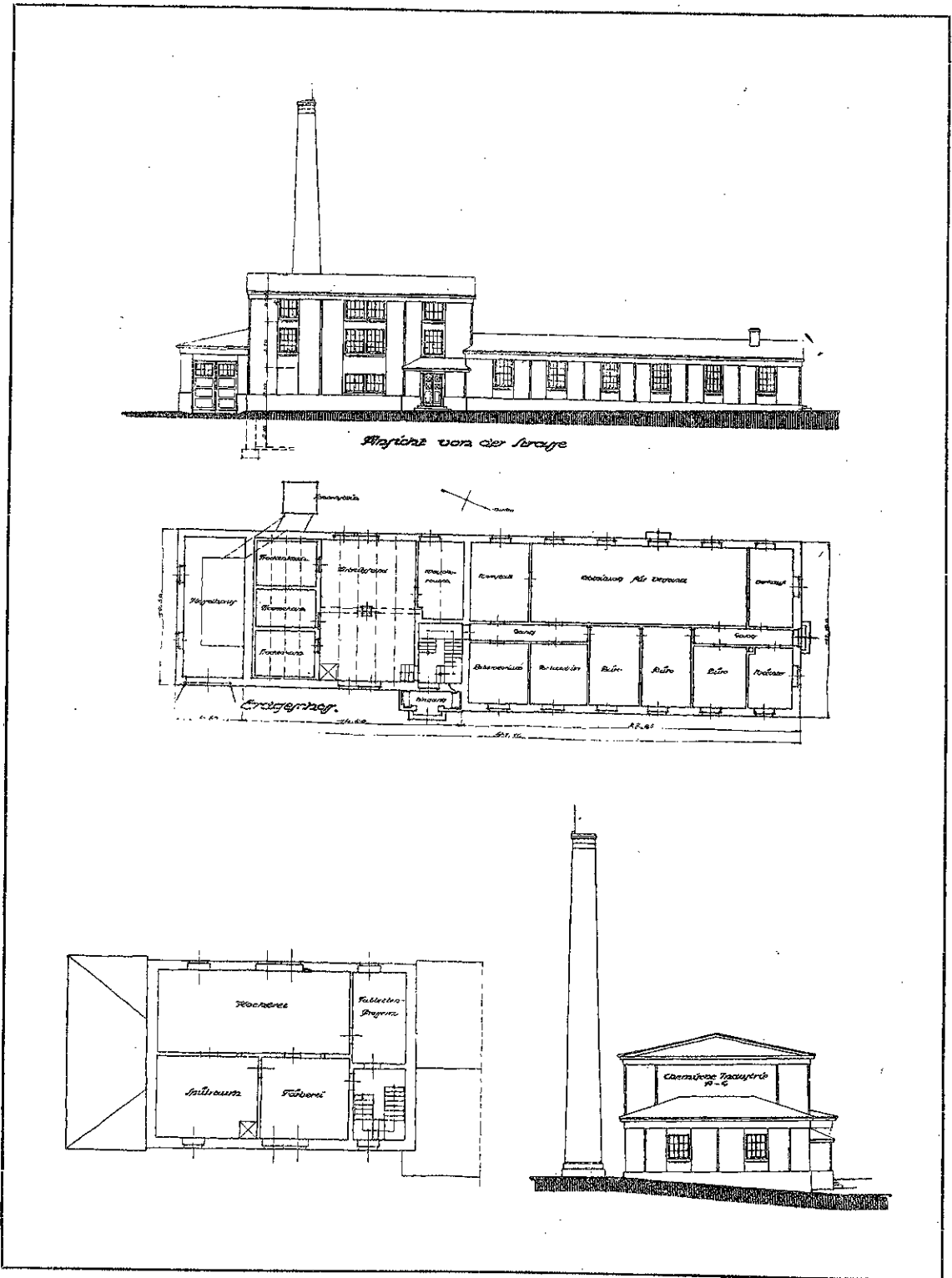


ARCHITEKT FRANZ HERRMANN IN FALKENBURG I. POM. □ LANDHAUS IN WALDFRIEDEN.

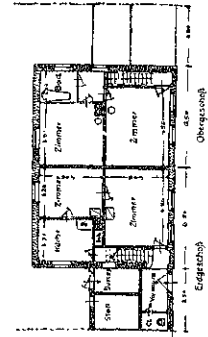
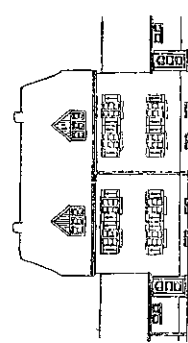
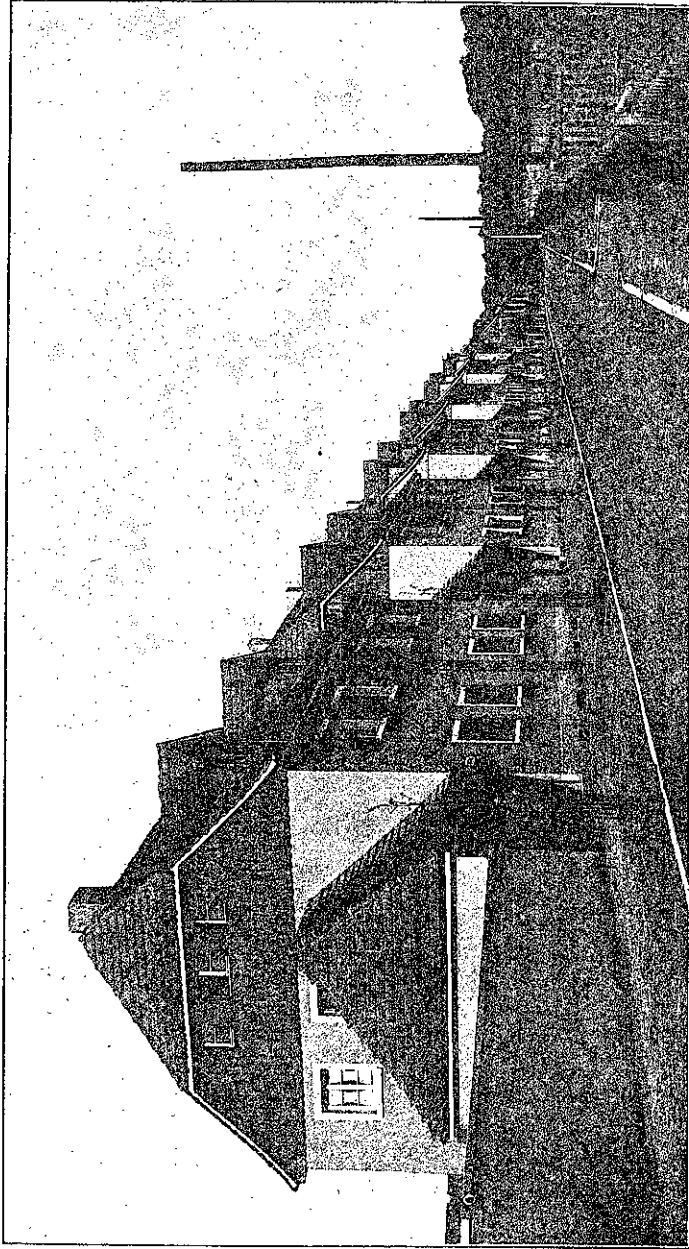




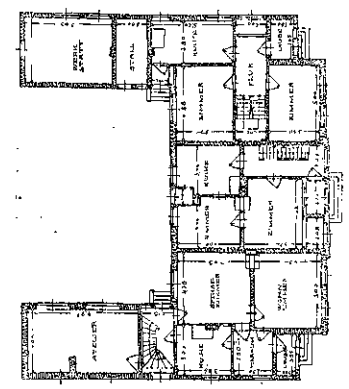
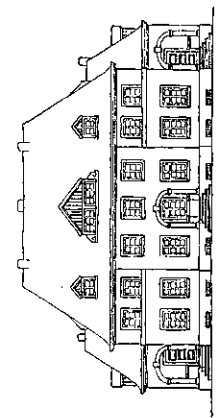
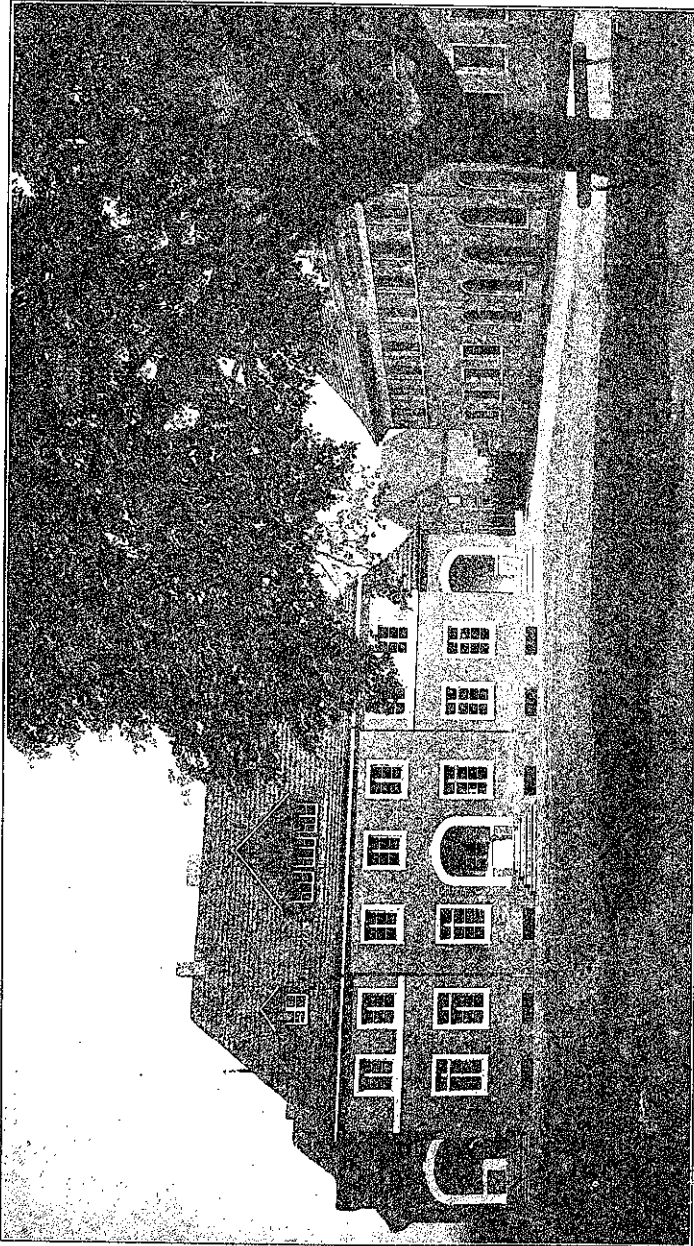
ARCH. FRANZ BALDA IN BERLIN. □□□ ENTWURF ZUM NEUBAU EINES LANDHAUSES IN WESENBURG MCKL.



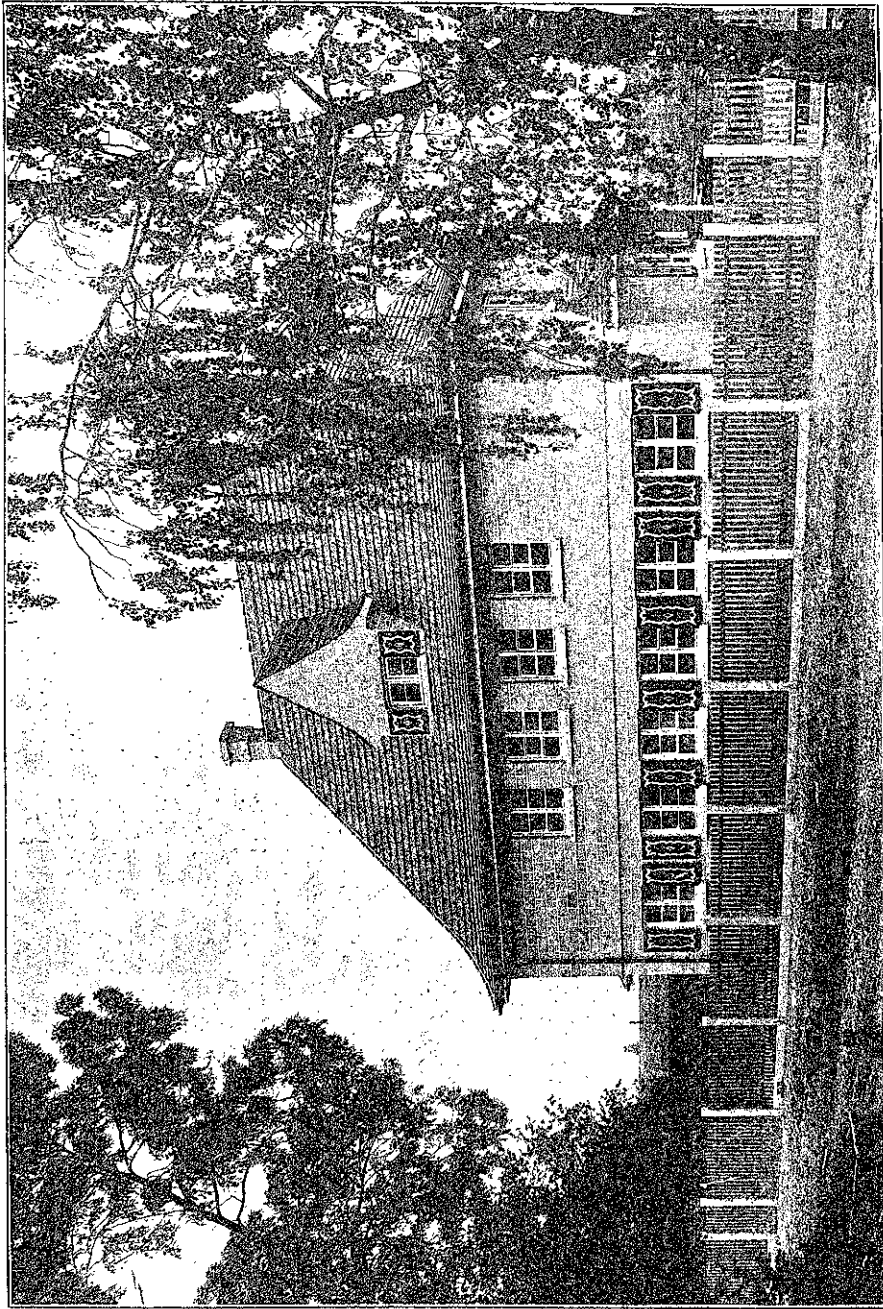
ARCHITEKT HELMUT HILLE IN ZITTAU. □ ————— □ FABRIK FÜR PHARMAZEUTISCHE PRÄPARATE.



BAURAT TH. OVERHOFF IN DESSAU. □ SIEDLUNG „HOHE LACHE“, DOPPELHÄUSER AM WALDWEG.




BAURAT TH. OVERHOFF IN DESSAU. □ ————— □ SIEDLUNG „HOHE LACHE“, DREIHAUSERGRUPPE AM WALDKATER.

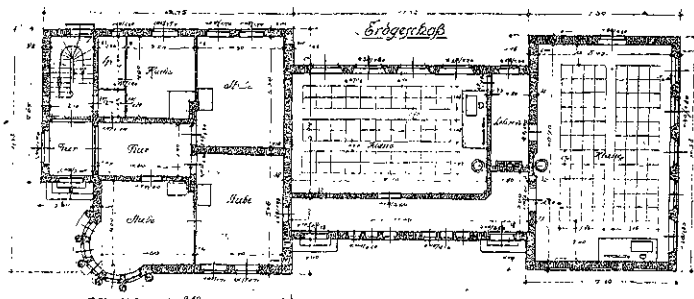
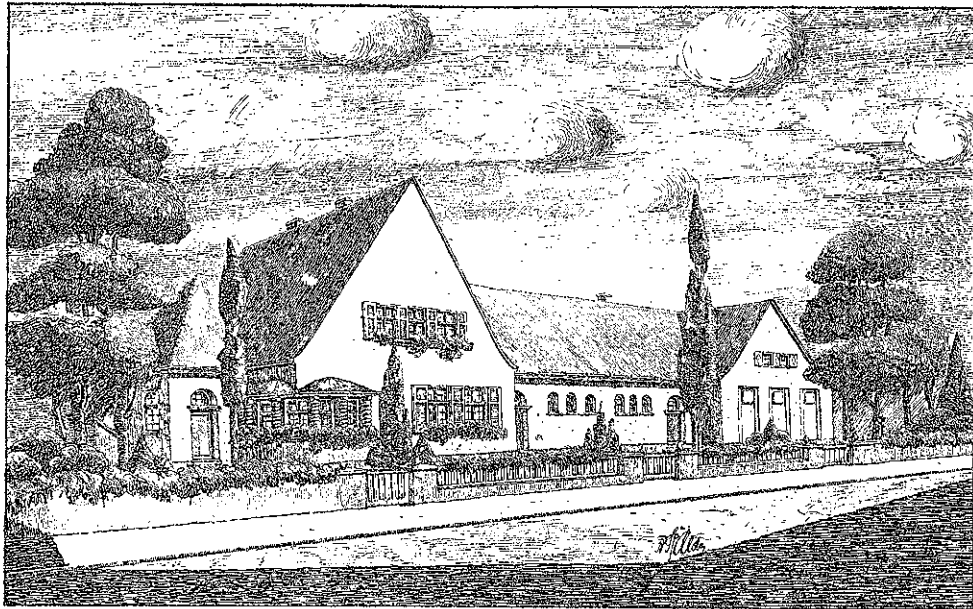


ARCHITEKT B. D. A. MAX UNGLEHRT IN MÜNCHEN. □ ————— □ DOPPELEINFAMILIENHAUS.



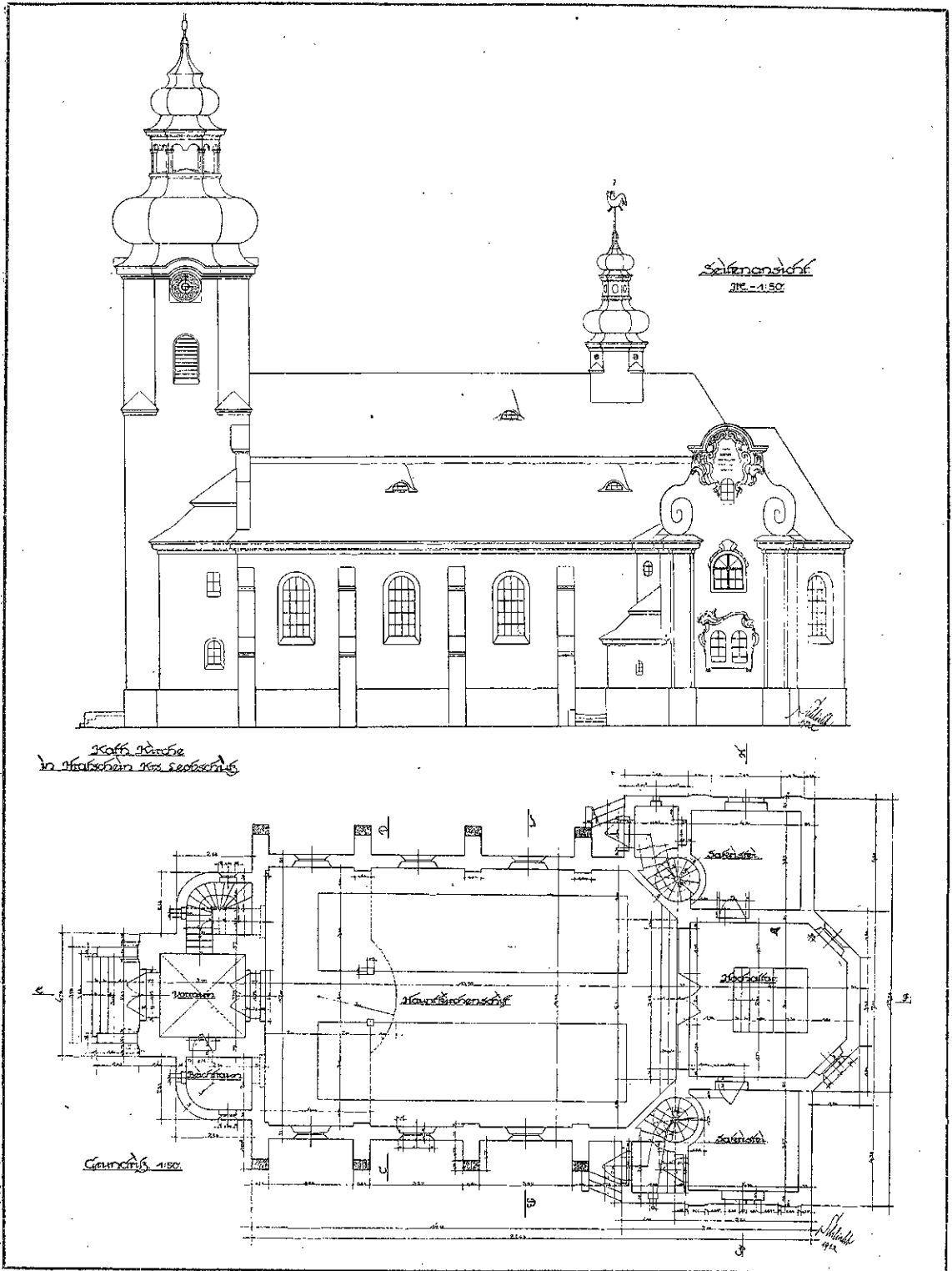
ARCHITEKT KURT BUCHHOLZ IN ANKLAM, VORPOMM.  ENTWURF ZU EINEM VIERFAMILIEN-WOHNHAUS.



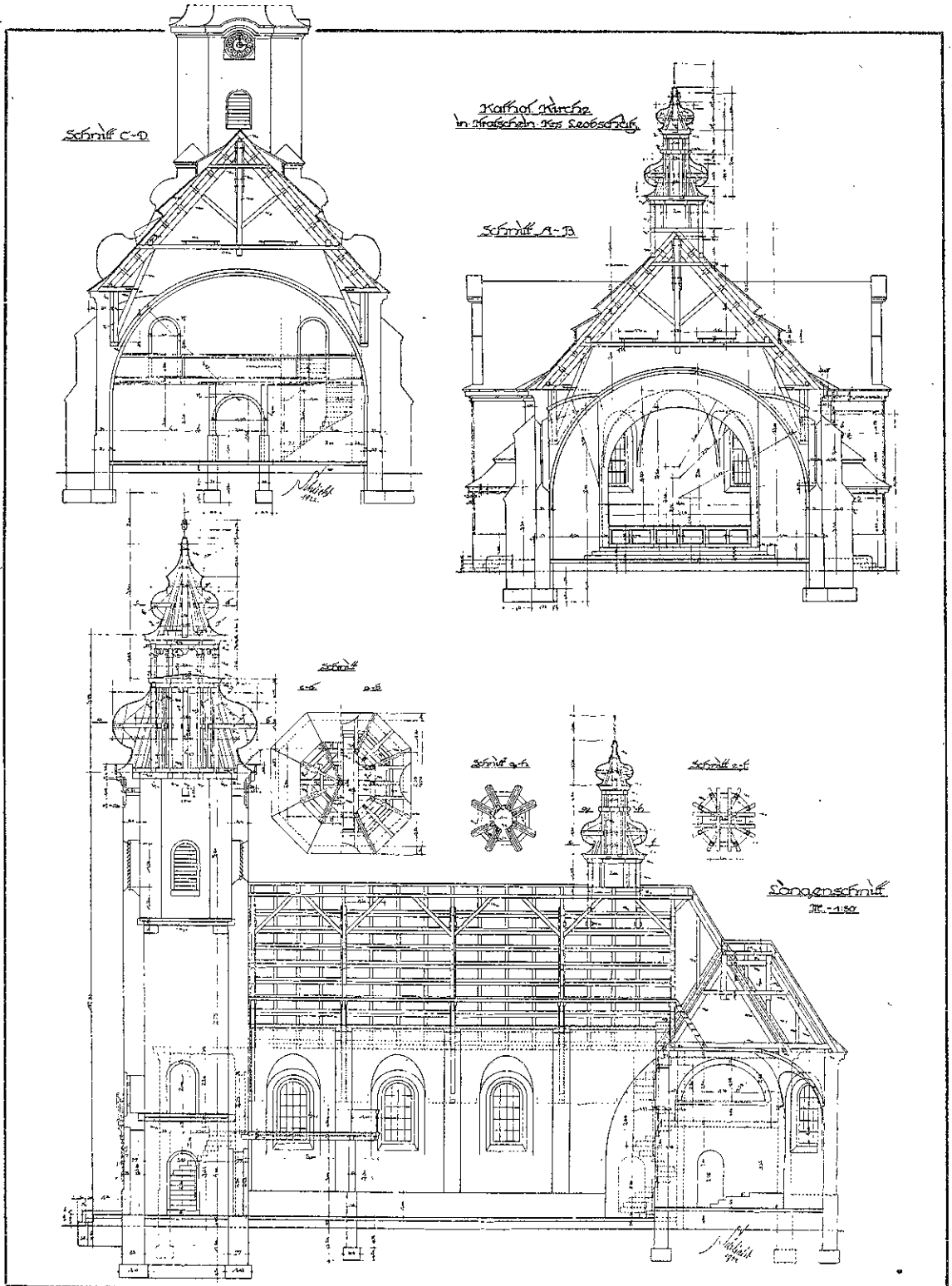


ARCHITEKT FRANZ BALDA IN BERLIN. □ ————— □ ZWEIKLASSIGE SCHULE IN AGLOHNEN.

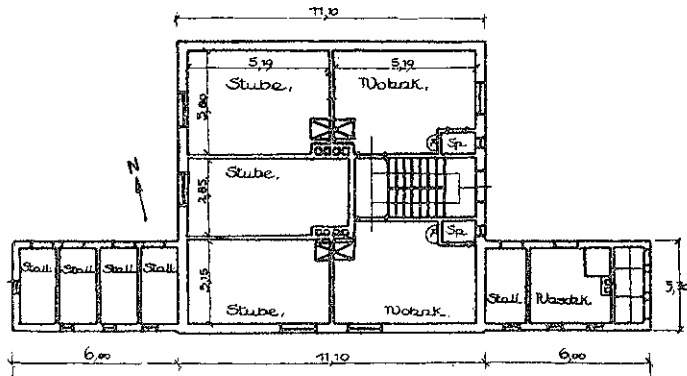
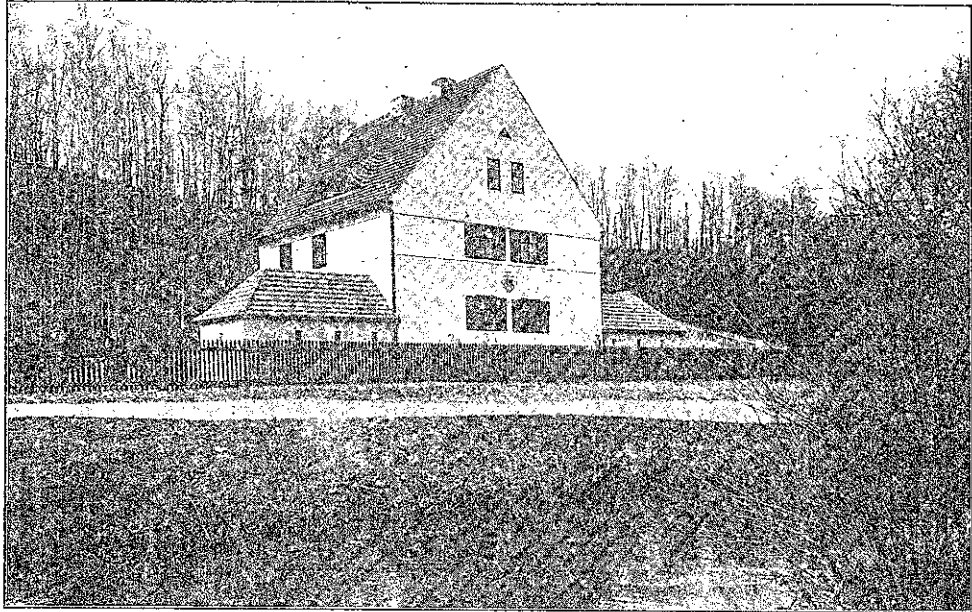




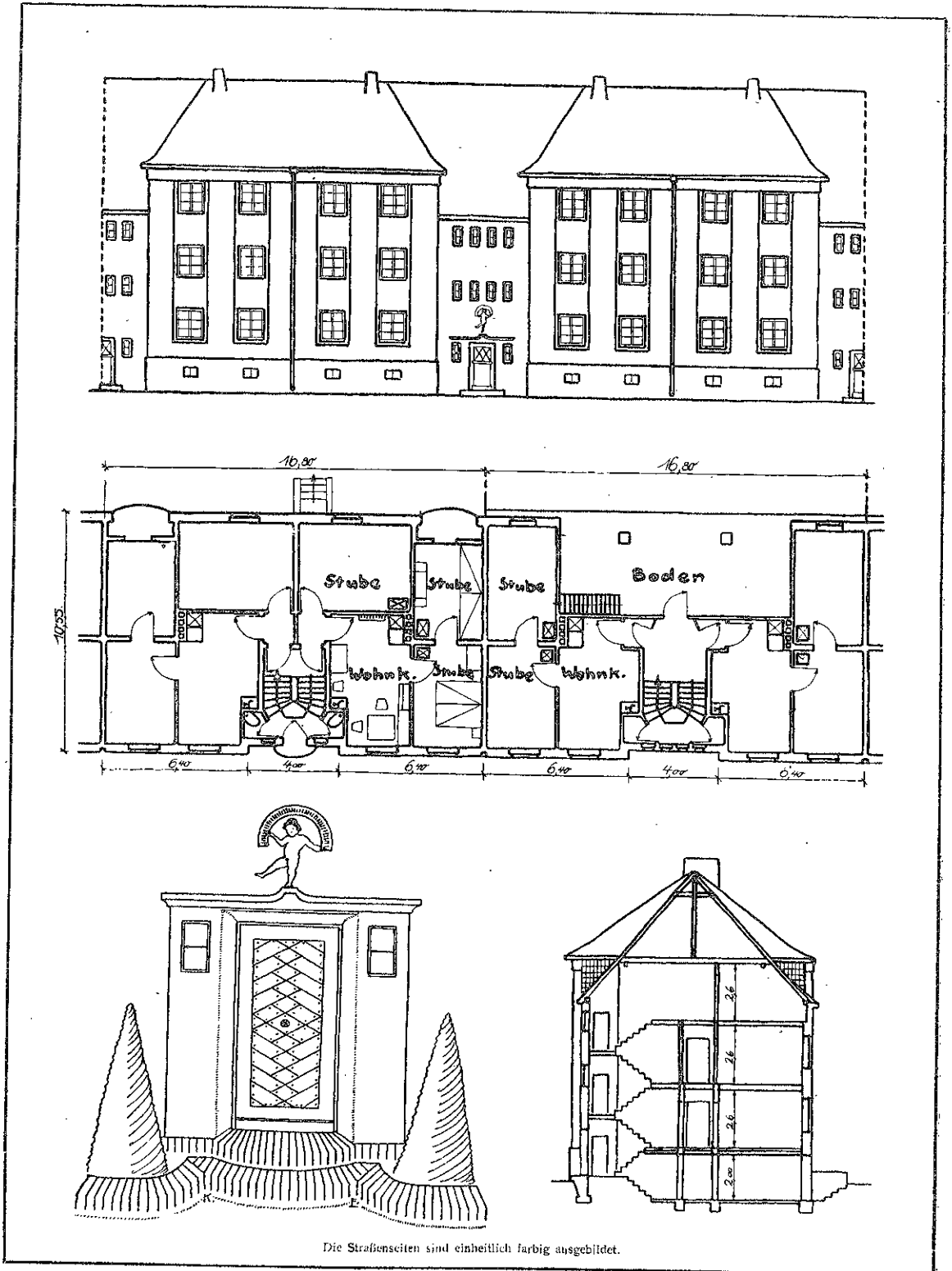
ARCHITEKT HANS SCHLICHT IN BRESLAU. □ ——— □ KATH. KIRCHE IN KRATSCHIN, KR. LEOSCHÜTZ.



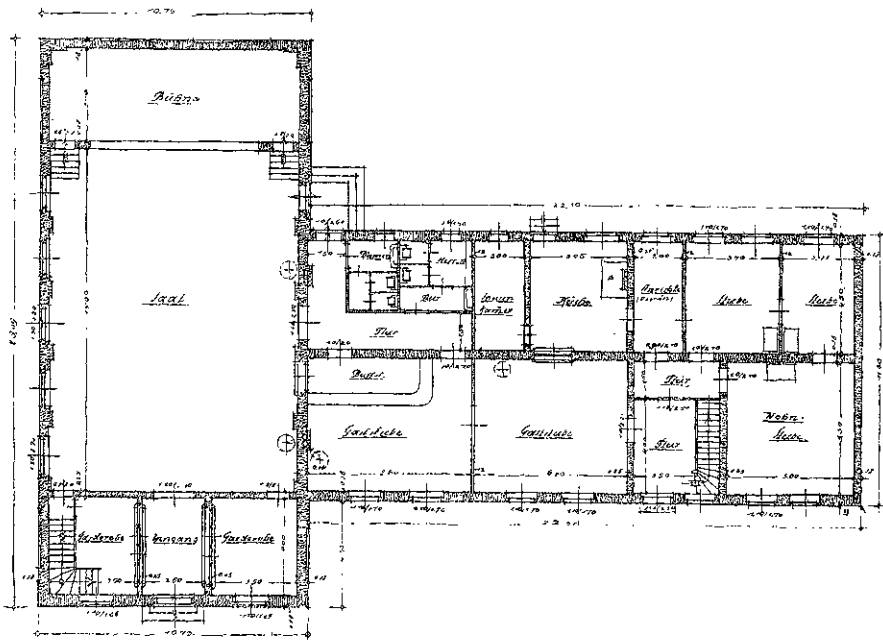
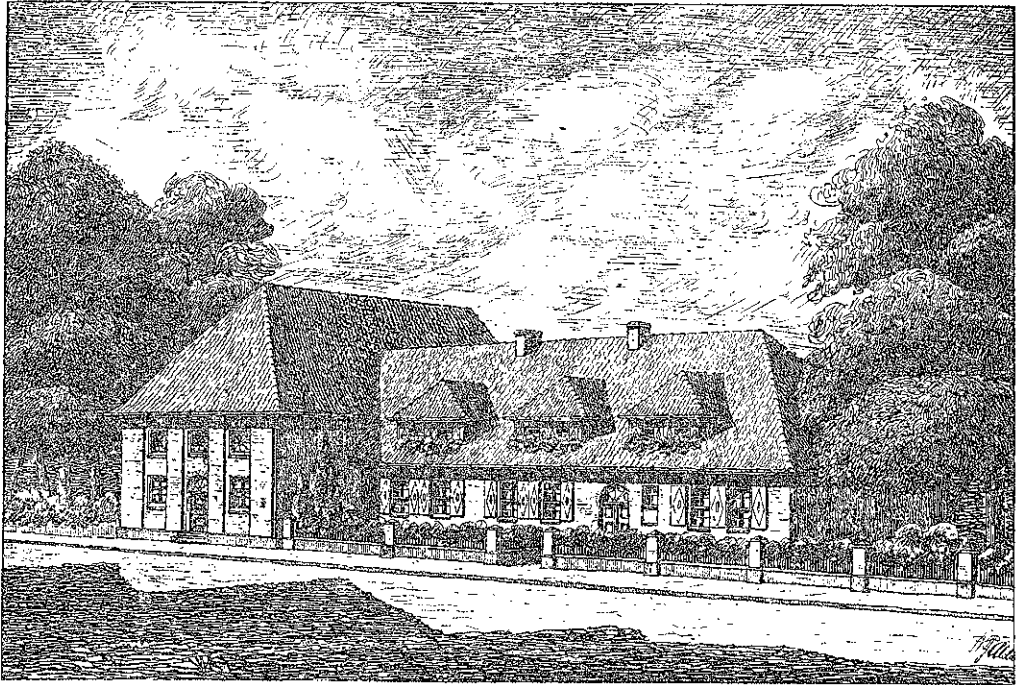
ARCHITEKT HANS SCHLICHT IN Breslau. □ ——— □ KATH. KIRCHE IN KRATSCHEIN, KR. LEOBSCHÜTZ.



ARCHITEKT KARL ERBS IN PATSCHKAU. □ ————— □ STÄDTISCHES ARBEITERHAUS IN PATSCHKAU.



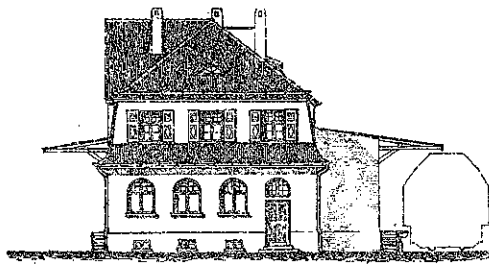
Die Straßenseiten sind einheitlich farbig ausgebildet.



ARCHITEKT FRANZ BALDA IN BERLIN. □ ————— □ ENTWURF ZU EINEM GASTHAUS.





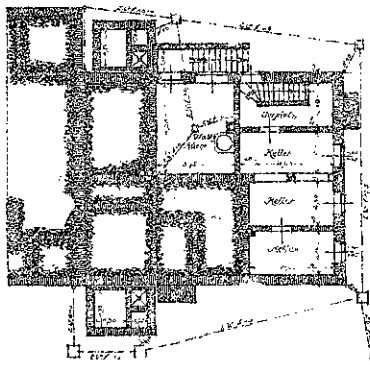
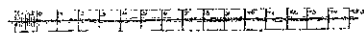


*Seitenansicht.*

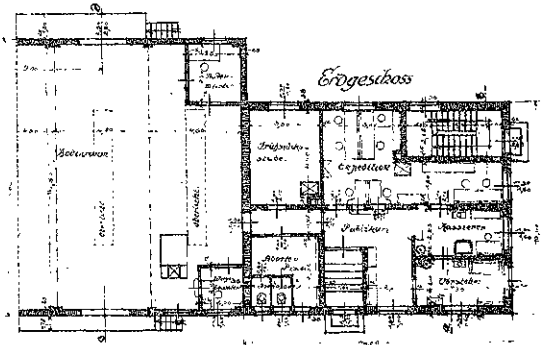


*Vorderansicht.*

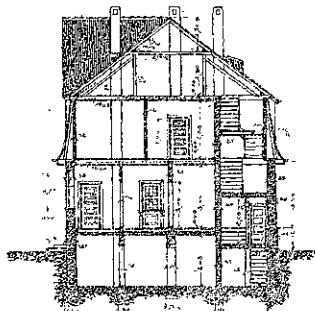
Maßstab, 1:100



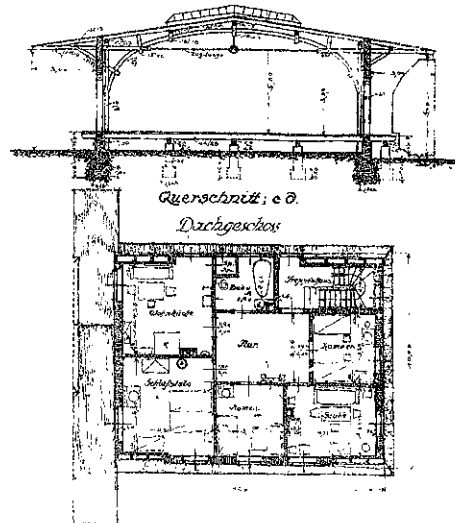
*Kellergeschoß.*



*Erdgeschoss*

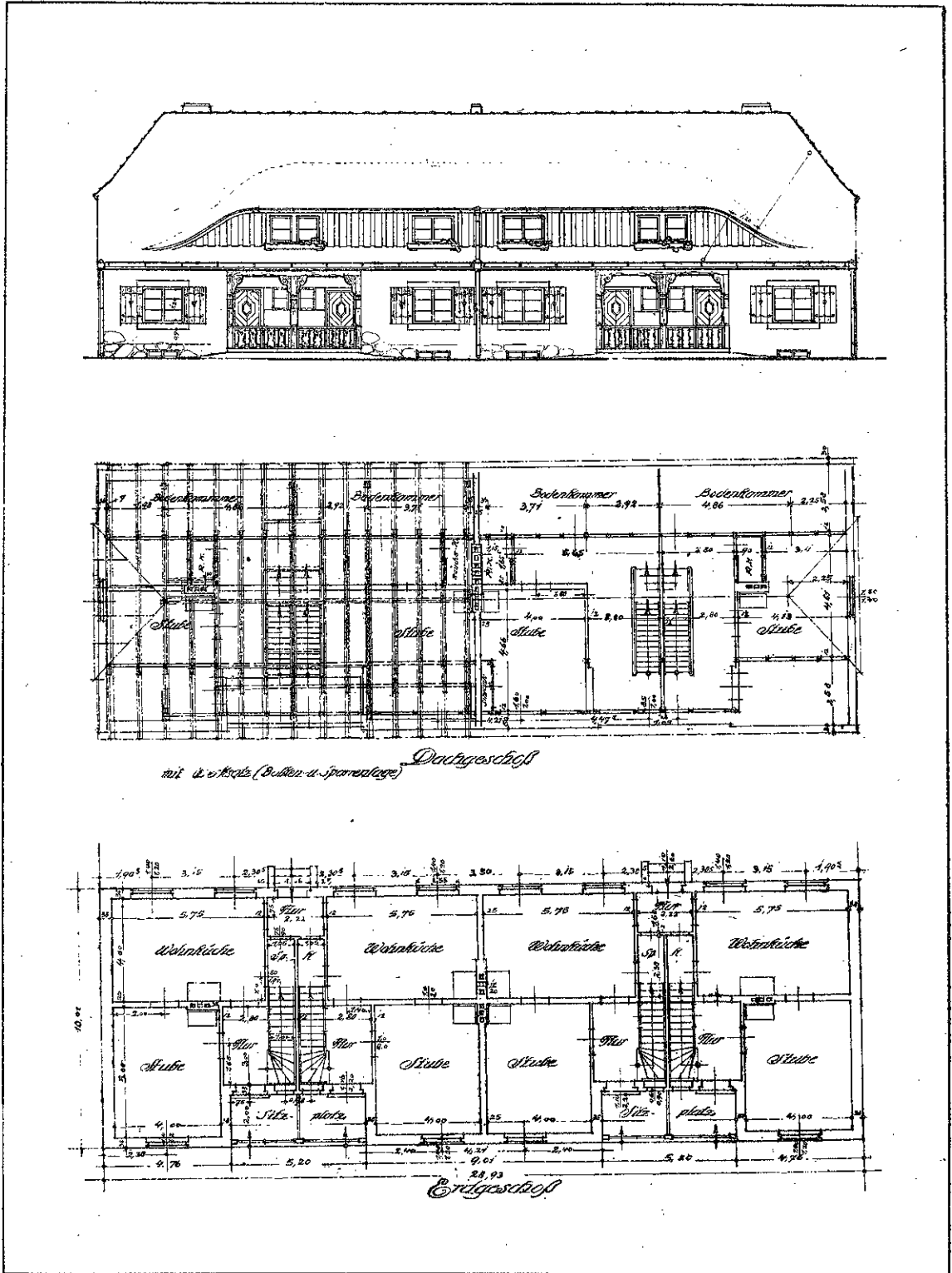


*Querschnitt: a. b.*

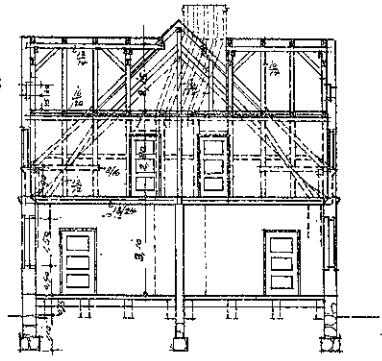
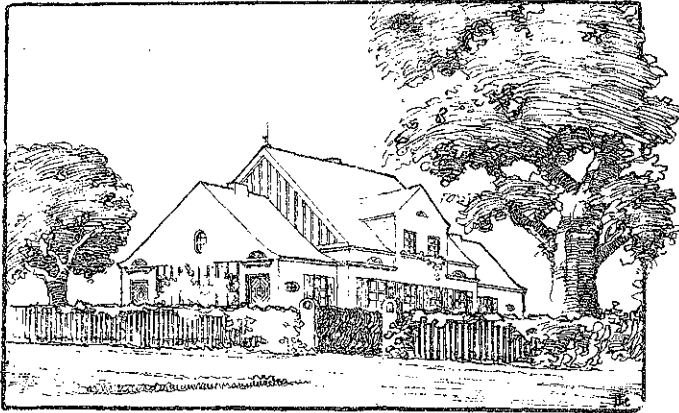


*Querschnitt: c. d.  
Dachgeschoss*

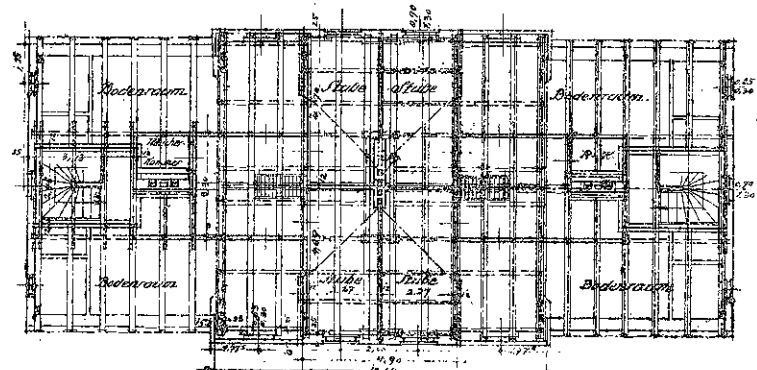




ARCHITEKT B. D. A. HAMPEL IN LYCK □ □ □ □ VIERFAMILIEN-ARBEITER-WOHNHAUS IN OSTPREUSSEN.



*Schnitt ef*



*Dachgeschoss mit Werksatz und Sparrenlage.*

*Erdgeschoss*

